



## BDU Tactical Uniform set

---

SN: 15916

12 different camouflage textures

Vat-Dyed 35/65 Polyester/Cotton Rip-Stop Construction

240 GSM

Pants: 10-Pocket Design, Reinforced double groin layer, Permanent Press, Wrinkle Resistant CL-8, 2-Easy Access Slanted Cargo Pockets With Drain Holes With Elastic Drawstring With Cord Lock For Secure Closure, 2-Bellowed Lower Leg Pockets With Hook & Loop Closures, Hook & Loop Closure Pocket Flaps, 1" Wide Belt Loops With 2-1/4" Openings

Jacket: 4 - Pocket design, 2 at the front chest, 2 at the arms, Milspec Velcro, Adjustable Velcro cuffs, 2 name tags, Velcro attached, Concealed Snag Proof 5-Button Placket, Pencil stalls on sleeve, Zigzag stitched hook & hoop - collar can be worn up or down.

---



Colors:

BS04-Italian Camo



BS02-Desert Digital



BS11-Woodland



BS07-Olive Drab



BS05-Marpat



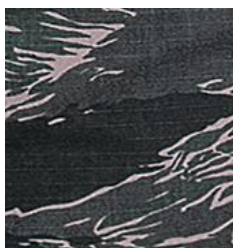
BS06-Multi Cam



BS09-Tiger Regular



BS10-Tiger Tactical



BS13-Contructor



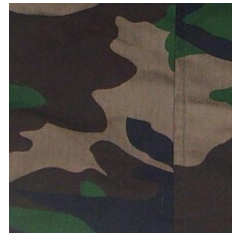
BS12-Digital  
Woodland



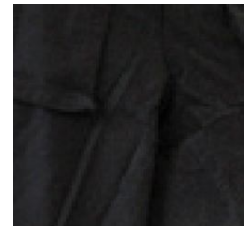
BS01-ACU



BS03-DPM



BS08-Black





Sizes:

Jacket	S	M	L	XL	XXL
Back length	<u>74.0</u>	<u>75.0</u>	<u>76.5</u>	<u>77.8</u>	<u>79.1</u>
Chest	<u>90.0</u>	<u>100.0</u>	<u>113</u>	<u>123.2</u>	<u>133.4</u>
Shoulder	<u>44.5</u>	<u>46.0</u>	<u>48.3</u>	<u>50.8</u>	<u>53.3</u>
Sleeve length	<u>60.5</u>	<u>61.6</u>	<u>62.9</u>	<u>64.1</u>	<u>65.4</u>
Armhole	<u>51.0</u>	<u>53.4</u>	<u>55.9</u>	<u>58.4</u>	<u>61.0</u>
Cuff 1/2	<u>17.5</u>	<u>18.5</u>	<u>18.5</u>	<u>20.0</u>	<u>21.0</u>
Collar	<u>42.0</u>	<u>44.0</u>	<u>46.0</u>	<u>50.0</u>	<u>*</u>
LW chest pocket	<u>19*13</u>	<u>19*13</u>	<u>19.5*14</u>	<u>19.5*14</u>	<u>19.5*14</u>
LW low pocket	<u>20*18</u>	<u>20*18</u>	<u>21*19</u>	<u>22.5*19.5</u>	<u>22.5*19.5</u>

Trousers	S	M	L	XL	XXL
Out length w/waist	<u>107.0</u>	<u>109.9</u>	<u>111.1</u>	<u>112.4</u>	<u>113.7</u>
Inseam	<u>83.1</u>	<u>83.1</u>	<u>83.1</u>	<u>83.1</u>	<u>83.1</u>
Waist	<u>74.0</u>	<u>84.0</u>	<u>94.0</u>	<u>104.0</u>	<u>110.5</u>
Hip	<u>97</u>	<u>106.7</u>	<u>116.8</u>	<u>127.0</u>	<u>135.9</u>
Knee	<u>52</u>	<u>55.3</u>	<u>58.5</u>	<u>60.6</u>	<u>64.5</u>
Bottom	<u>41.3</u>	<u>43.2</u>	<u>45.1</u>	<u>45.1</u>	<u>47.0</u>